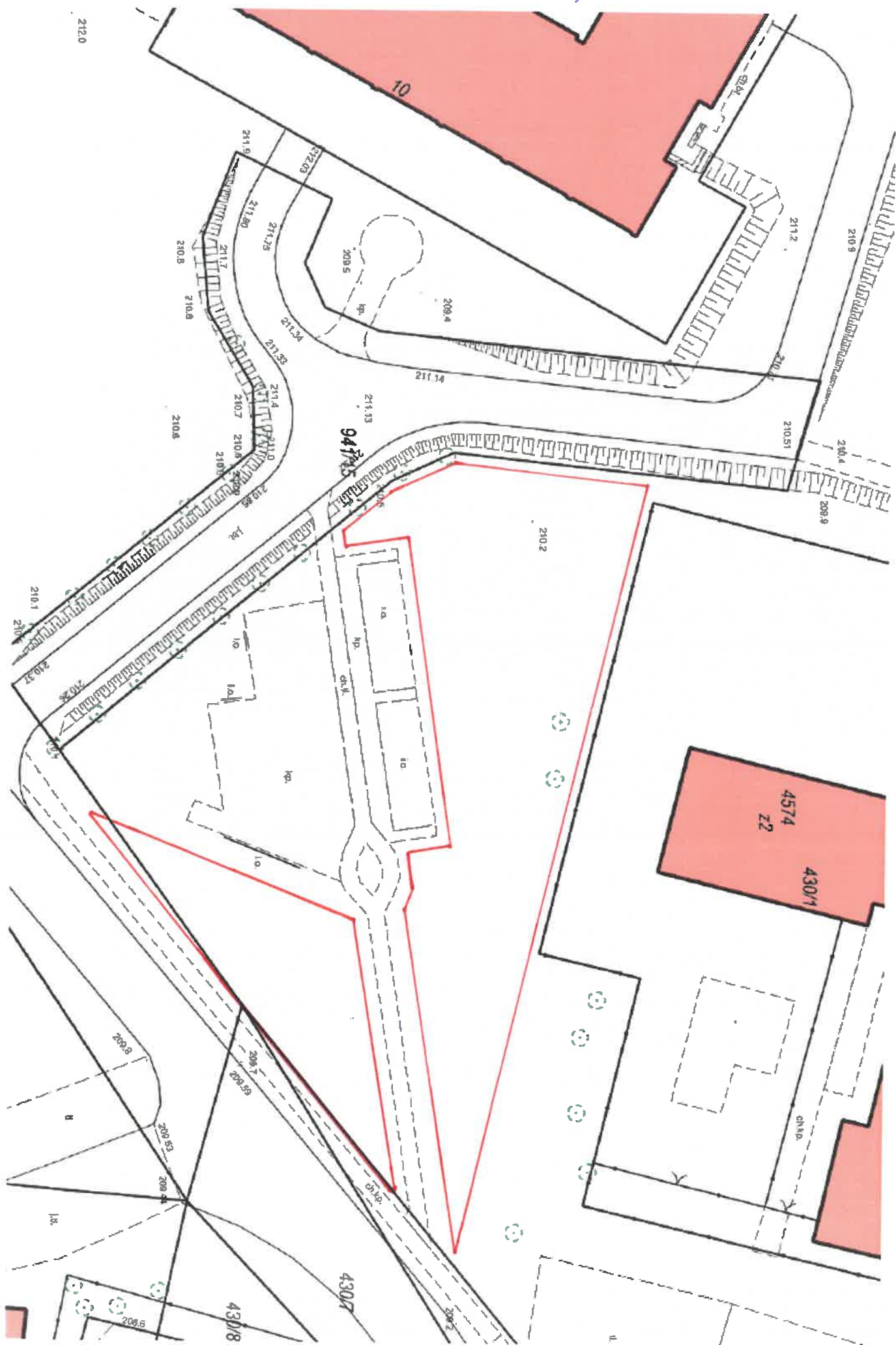


212.0







[illegible]

This is a detailed cadastral map of a residential area. The map features several red-shaded buildings, each labeled with a plot number and an address. The buildings are arranged in a grid-like pattern, with streets running horizontally and vertically. The streets are labeled with names such as 'Lomb' and 'Lomb'. The map also includes various survey points marked with green circles and numbers, and a network of lines representing property boundaries and infrastructure. The overall layout shows a well-organized urban environment with clear property demarcations.